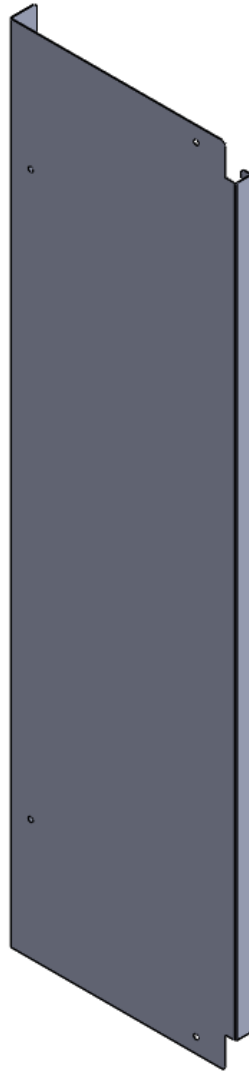


# Low Profile (Base) End Panel Installation



Carefully read the contents of these instructions, as the instructions indicate the correct step by step procedure to assemble the product. In the event of assembly problems or missing parts, please call our customer service department at **616-842-5330**.

## **CAUTION:**

ASSEMBLED UNIT IS VERY HEAVY. DO NOT ATTEMPT TO LIFT OR MOVE WITHOUT ASSISTANCE.

THE MANUFACTURER OF THIS DISPLAY ASSUMES **NO LIABILITY** FOR INJURY CAUSED BY IMPROPER ASSEMBLY / INSTALLATION OF THIS DISPLAY.



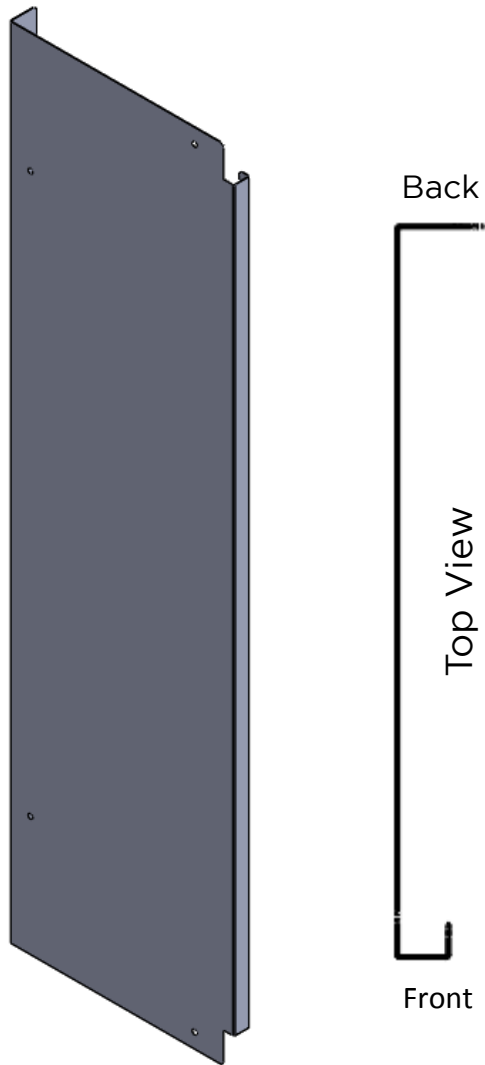
## **WARNING:**

This product contains chemicals known to the State of California to cause cancer and birth defects or other reproduction harm.

For more information, go to [www.P65Warnings.ca.gov](http://www.P65Warnings.ca.gov)

INF BASE END PANEL KIT PF1  
Item #415621 (Silver)  
Item #415620 (Black)

# Low Profile (Base) End Panel Installation



Upper and lower panels can be installed on either side of a fixture. They are "non-handed" parts. Simply flip the panel for use on the opposite side.

305908IS

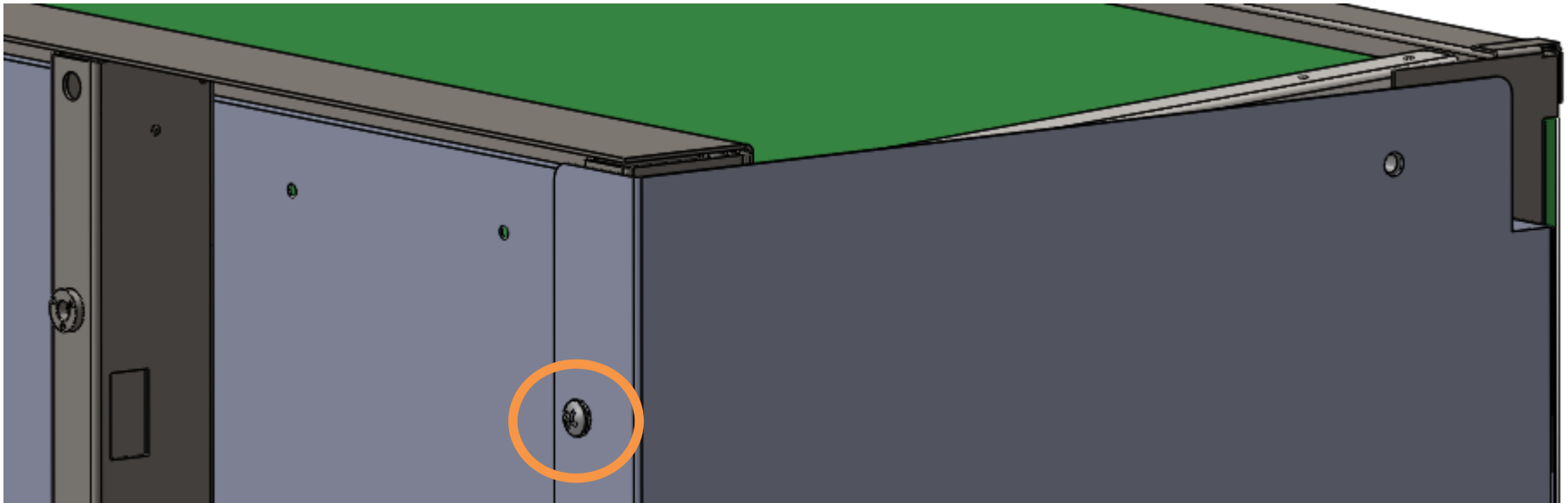
11-06-2020

© 2020 Harbor Industries

\*\*IT IS THE RESPONSIBILITY OF THE INSTALLER TO CAREFULLY READ & FOLLOW ALL STEPS IN THE INSTRUCTIONS.

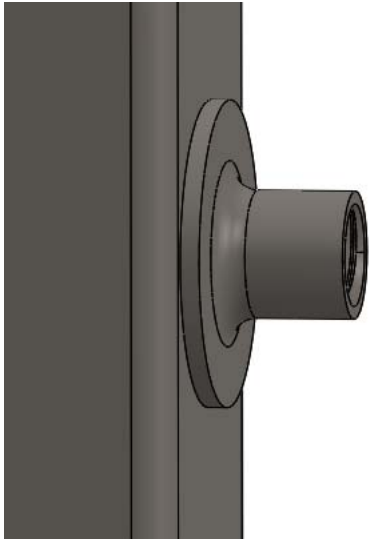
**HARBOR**

# Low Profile (Base) End Panel Installation



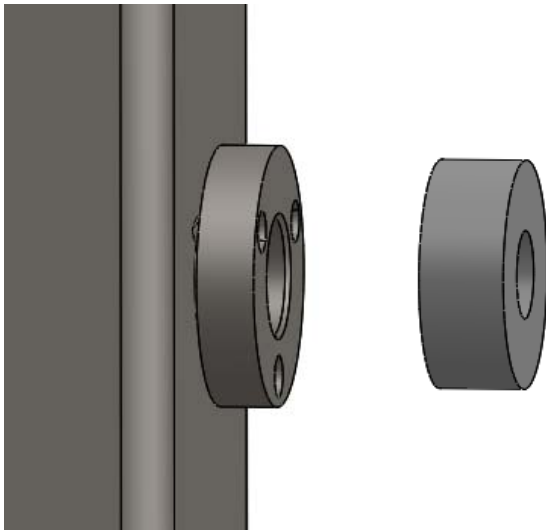
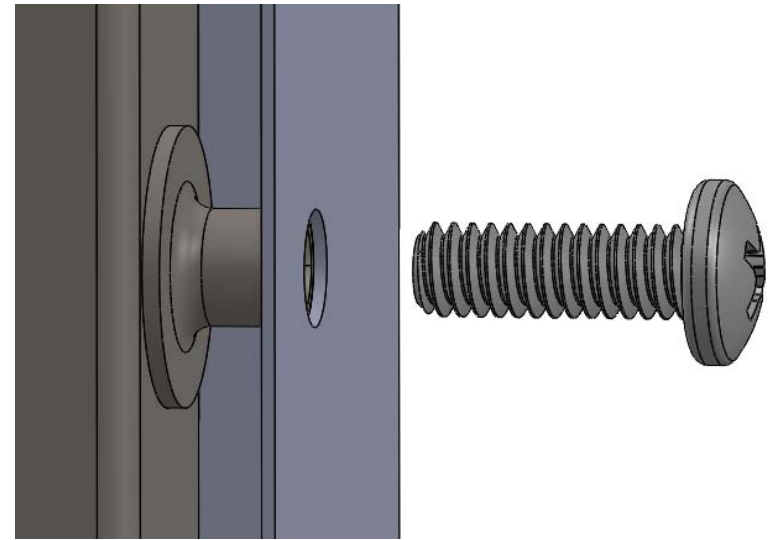
Align hole on back of end panel with weld stud on back of fixture upright. Attach with provided hardware (details on next page).

# Low Profile (Base) End Panel Installation

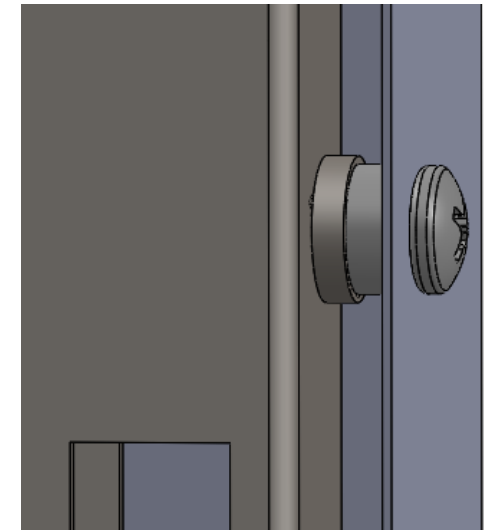


Identify weld stud style on back of fixture upright.

Taller weld stud will not require  $\frac{1}{4}$ " spacer. End panel attaches directly with  $\frac{1}{2}$ " bolt provided.



Flat weld stud requires  $\frac{1}{4}$ " spacer between end panel as shown.



305908IS

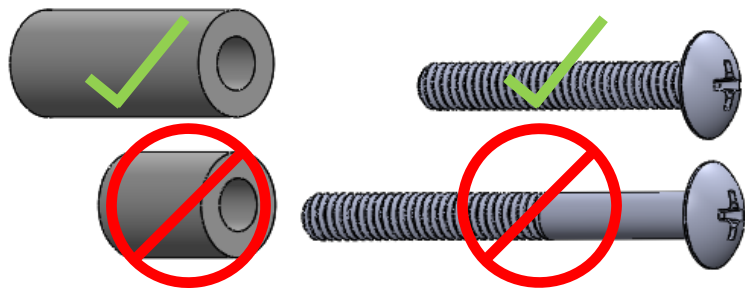
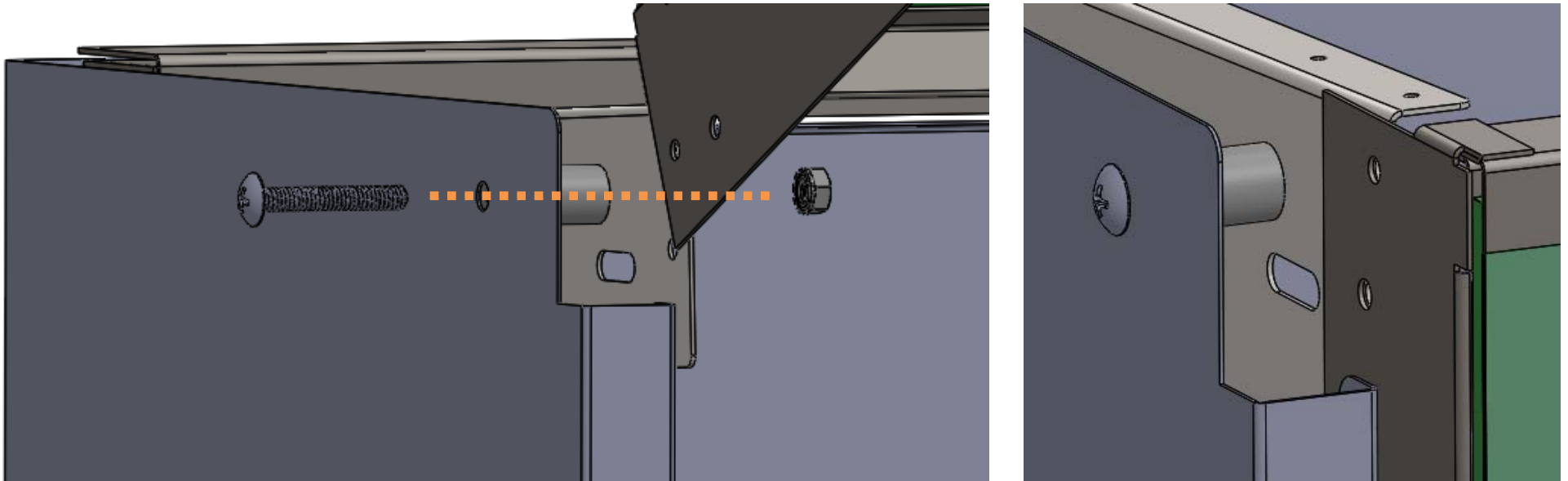
11-06-2020

© 2020 Harbor Industries

\*\*IT IS THE RESPONSIBILITY OF THE INSTALLER TO CAREFULLY READ & FOLLOW ALL STEPS IN THE INSTRUCTIONS.

**HARBOR**

# Low Profile (Base) End Panel Installation



Align hole in top corner of end panel with matching hole in header assembly. Attach using shorter through bolt (1-3/4"), long spacer (1-1/4"), and keps nut.

Spacer installs between End Panel and Header.

305908IS

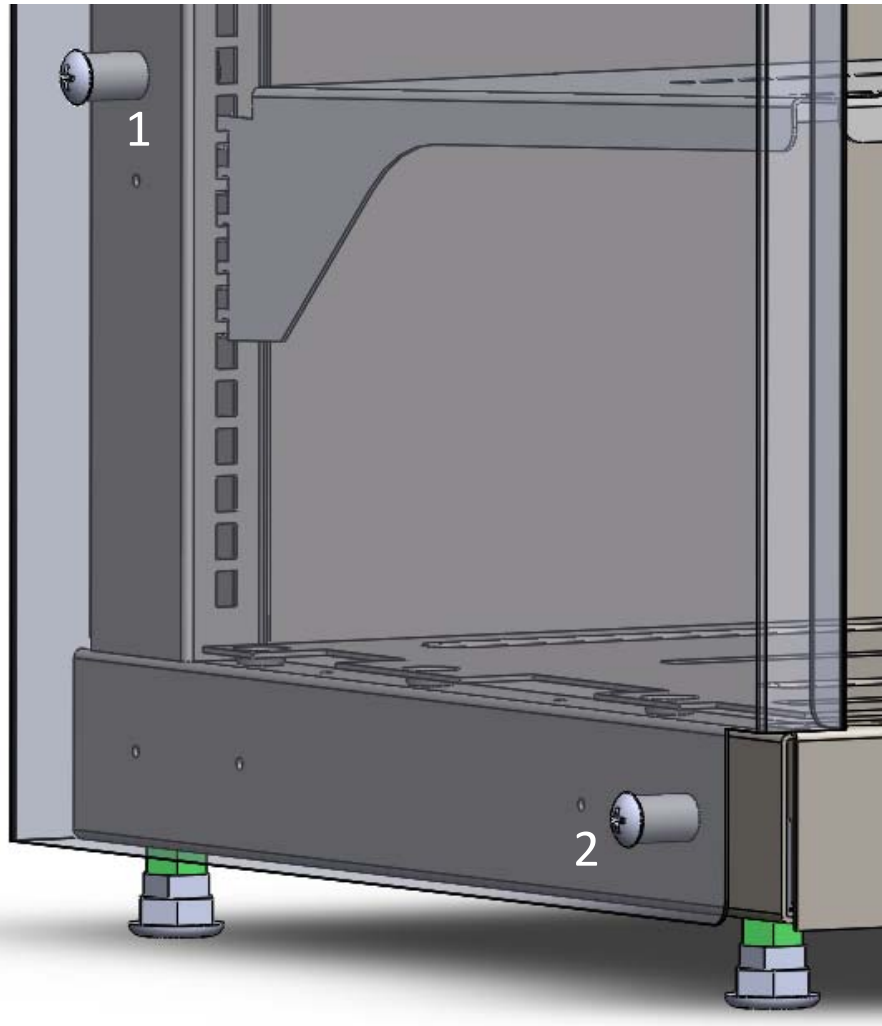
11-06-2020

© 2020 Harbor Industries

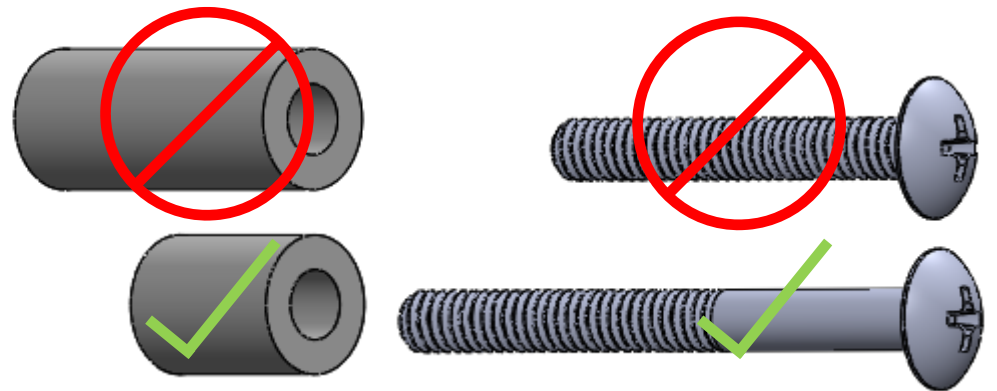
\*\*IT IS THE RESPONSIBILITY OF THE INSTALLER TO CAREFULLY READ & FOLLOW ALL STEPS IN THE INSTRUCTIONS.

**HARBOR**

# Low Profile (Base) End Panel Installation



Attach the bottom of the end panel using long through bolts (2-1/2"), short spacers (11/16"), and keps nut in the two locations shown. Spacer install between the end panel and fixture leg.



Panel shown as transparent to allow for hole location details

305908IS

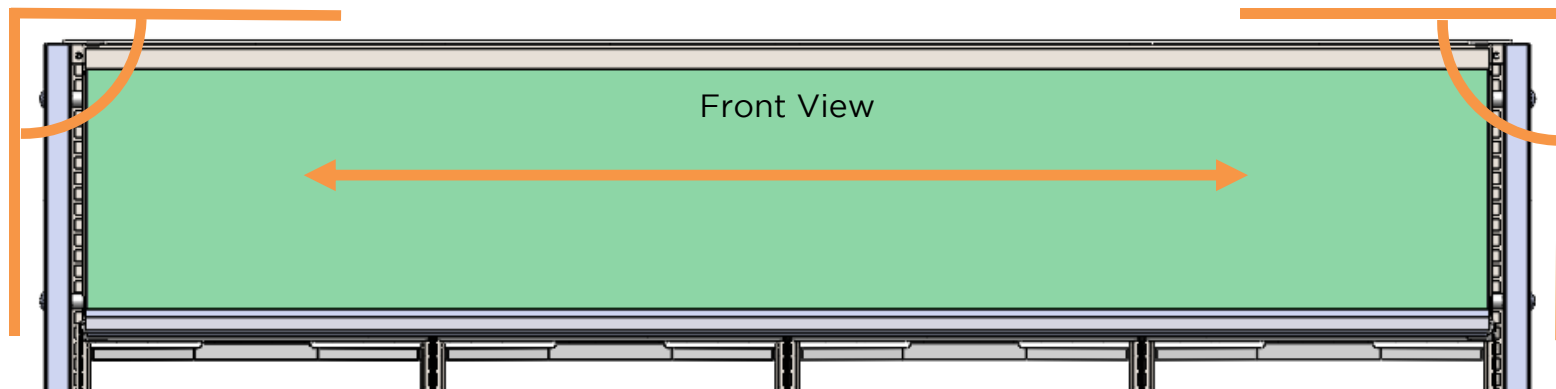
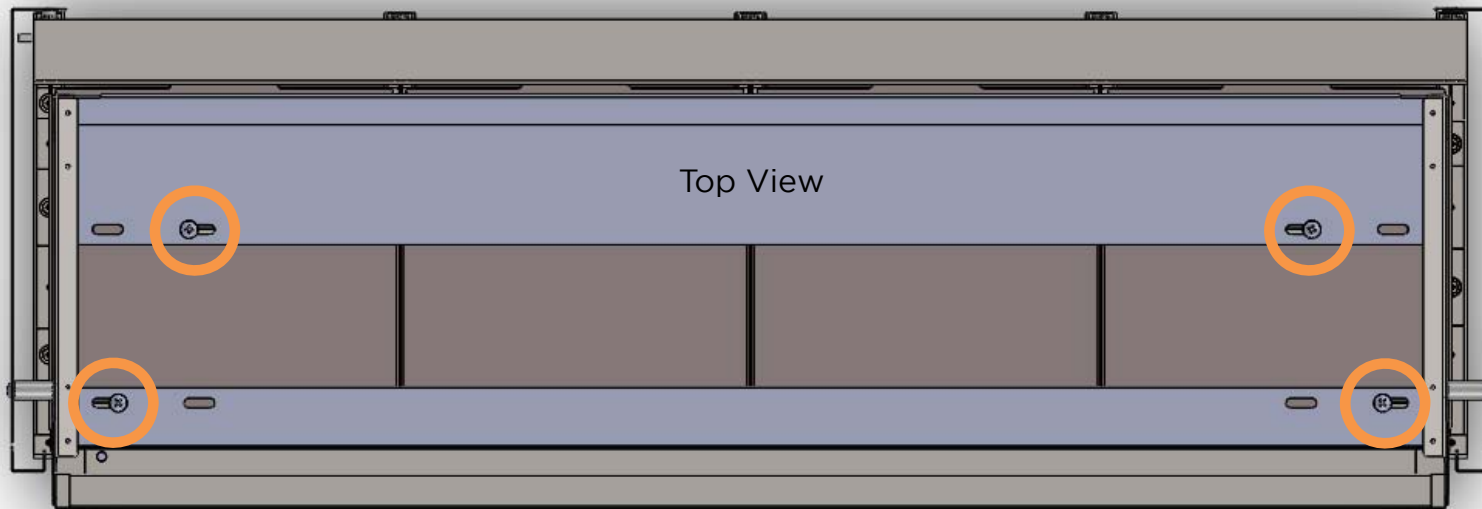
11-06-2020

© 2020 Harbor Industries

\*\*IT IS THE RESPONSIBILITY OF THE INSTALLER TO CAREFULLY READ & FOLLOW ALL STEPS IN THE INSTRUCTIONS.

**HARBOR**

# Low Profile (Base) End Panel Installation



To square up end panels, loosen the bolts and wing nuts attaching the header to fixture shelves. Slide header to left or right square up and tighten wing nuts and bolts to secure header in place.

305908IS

11-06-2020

© 2020 Harbor Industries

\*\*IT IS THE RESPONSIBILITY OF THE INSTALLER TO CAREFULLY READ & FOLLOW ALL STEPS IN THE INSTRUCTIONS.

**HARBOR**

SHEET 7 OF 7